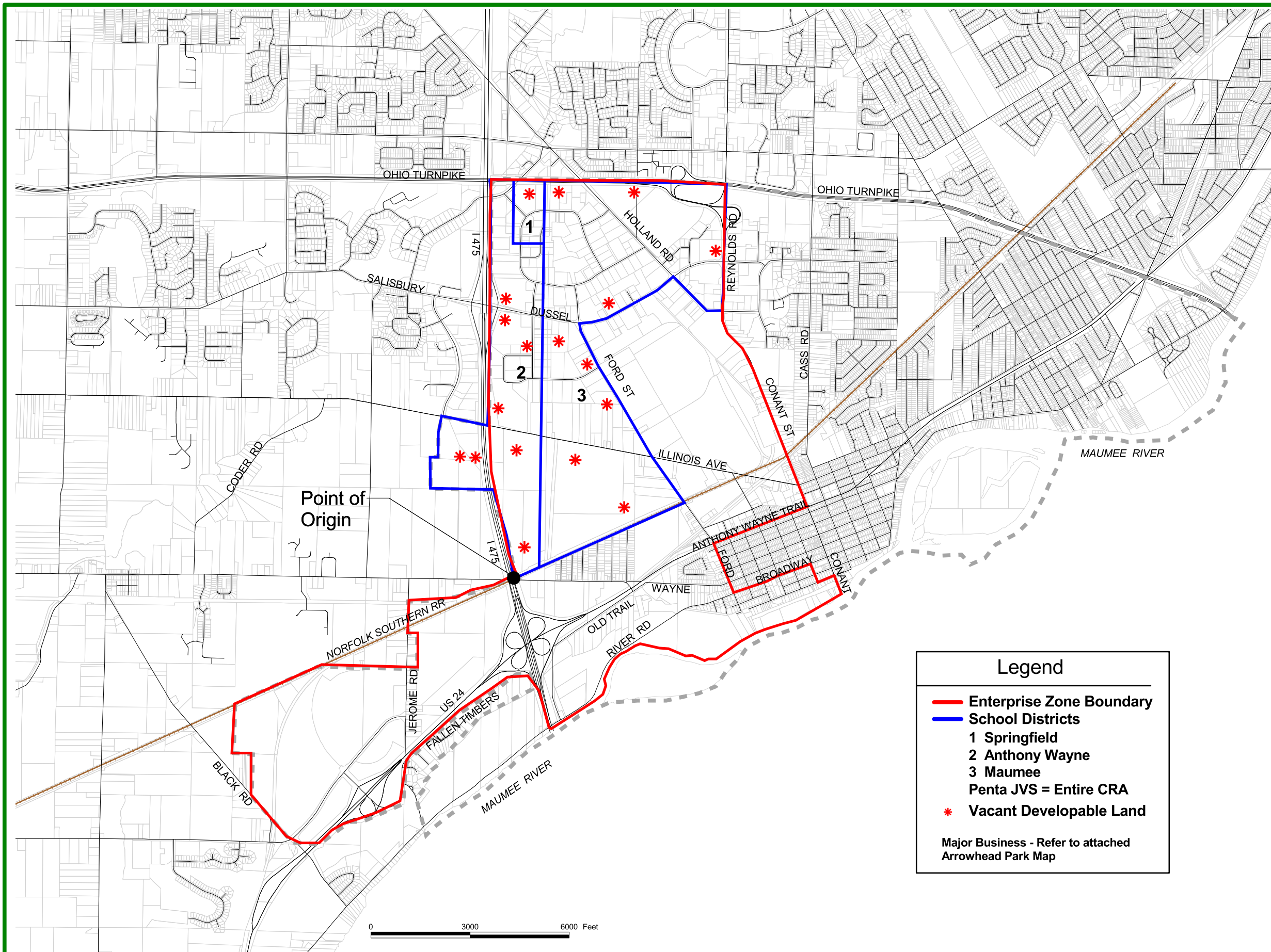


City of Maumee  
Enterprise Zone  
2002



**Legend**

- Enterprise Zone Boundary
- School Districts
- 1 Springfield
- 2 Anthony Wayne
- 3 Maumee
- Penta JVS = Entire CRA
- \* Vacant Developable Land

Major Business - Refer to attached Arrowhead Park Map

Basemap provided by Lucas County Auditor's Office

